



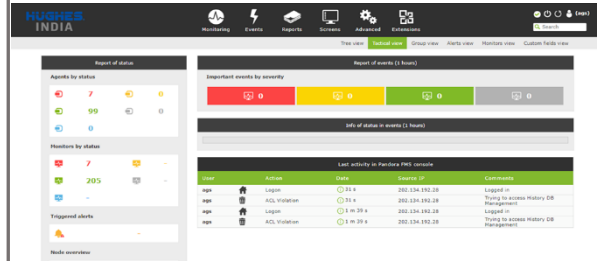
IN 500X

High Performance Dual SIM LTE SD-WAN CPE

IN500X is a SD-WAN CPE that supports MiMo and diversity, enabling higher throughputs when signal levels are stronger and adds robustness to link with weaker signals. It supports two LTE/3G connections in active/active configuration, active path selection, failover and host of other features. Has configurable Gbps ports for LAN & WAN applications and local breakouts.

The CPE supports industry standard network protocols and advance QoS, Network Security, centralised configuration management and system monitoring features.

IN500 can be paired with Outdoor MiMo antennas, indoor antennas, patch antennas depending on the requirements. The edge device can operate with a 220V/12V adaptor, be powered over ethernet.



HUGHES HIGH POWER OUTDOOR LTE ANTENNA

Specifications

SIM Slots	2
4G LTE Modem	2 – Active / Active
LTE Band	FDD- Bands 1/3/8 TDD- Bands 38/39/40/41
GSM/EDGE/WCDMA Band	DC-HSPA+/HSPA+/HSPA/UMTS: Bands 1/5/8/9 TD-SCDMA: Bands 34/39 GSM/GPRS/EDGE: 1800 MHz/900 MHz
WAN&LAN Interface	6* GE Configurable (WAN+LAN)
POE	1 (11-28V)
RS232/RS485	1 Ext/ Int (Depending on Physical Port Position)
USB interface	1 / 0 (Depending on Physical Port Position)
LED indicator	System, SIM, LAN
External Antenna	≥ 3dBi to 9dBi
MiMo / Diversity	Yes
Dimension(W×D×H)	228*152*35mm
Input voltage (DC)	12V DC
Max. power	≤24W
Throughput	Up-to 200 Mbps
Software Features	
Basic functions	DNS/DDNS, DHCP, ICMP, NAT, PPPoE, PAP, CHAP, Loopback interface, Static / Dynamic Routing Support, MPLS, QOS, GRE, IPv6
3G/4G function	3G/4G Band Selection
Zero Touch Provision	Yes, with Centralised provisioning & Configuration
Routing Protocol	Static routing, VRF, Policy Based Routing, Interface Routing, ECMP Routing, IPv4 dynamic routing protocols: RIP v1/v2, OSPFv2, BGP v4, IPv6 dynamic routing protocols: RIPng, OSPFv3, BGP, Bidirectional Forwarding Detection (BFD)
Link Failover	IP Reachability, On link outage due to high latency and/or high packet loss
Security Functions	Statefull firewall, Source and destination NAT, Filtering by IP address and address range, port and port range, IP protocol, DSCP etc, Internal connection, routing and packet marks, Address lists, RAW filtering to bypass connection tracking.MAC Address Filtering, Radius Support
VPN Function	IPSec, IKEv2 support, Tunnelling Protocols (OpenVPN, PPTP, PPPoE, L2TP, SSTP), Advanced PPP features (MLPPP, BCP), Simple tunnels (IPIP, EoIP) IPv4 andIPv6 support. VLAN, MPLS based VPNs
Encryption	DES, 3DES, AES-256, Blowfish, Twofish, Camellia
Bridge mode	In-Path
Diagnosis Tool	Ping, Traceroute, Bandwidth Test, Ping Flood, Packet Sniffer, Traffic Generator, File Fetch, Telnet, SSH
QoS Functions	HTB QoS with CIR, MIR, burst and priority support Basic QoS with simple queues Dynamic Client Rate Equalisation (PCQ)
System Status Log	Cellular/ Traffic/ VPN/ Accounting
Management	Console, Web, Controller Management